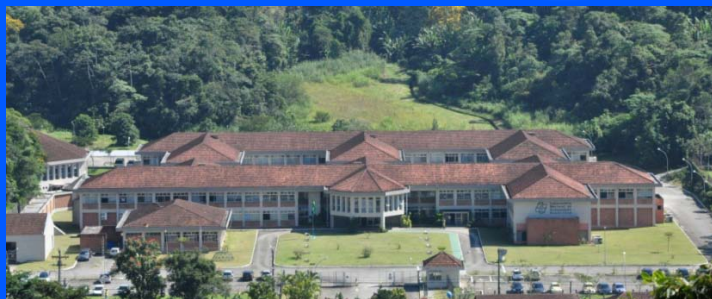


# Laboratório Nacional de Computação Científica



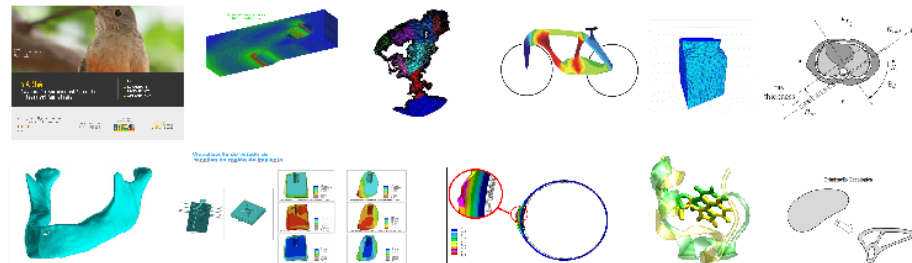
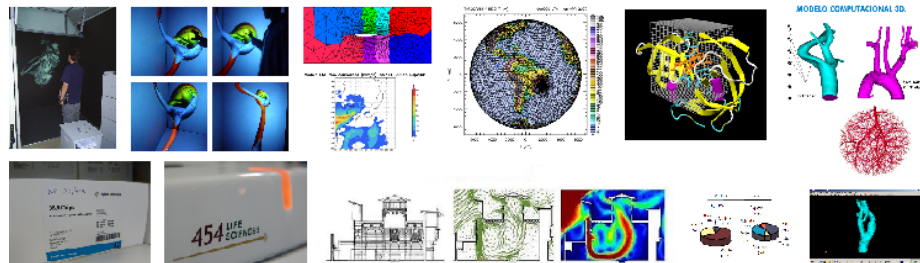
Ministry of  
Science and Technology

## National Laboratory of Scientific Computing

# LNCC

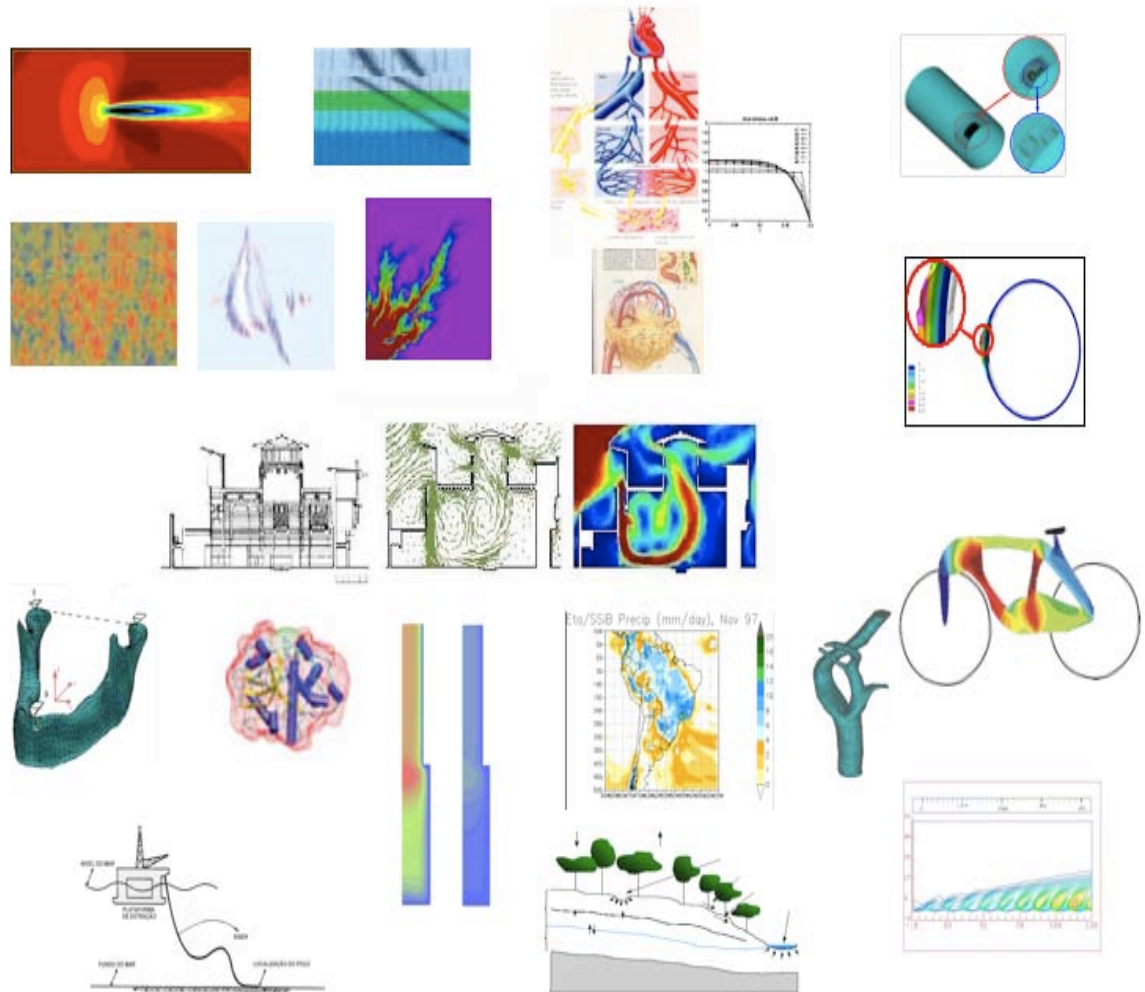


$$\frac{\partial v}{\partial t} + (v \cdot \nabla)v = -\nabla p + \nu \Delta v + f(x, t)$$
$$\nabla \cdot v = 0$$



# Computational Modeling

- Observation
- Physical model
- **Mathematical model**
- Mathematical Analysis of the solution
- Numerical model
- Results: validation and interpretation



# Background Information

LNCC was created in 1980 under the sponsorship of the Ministry of Science and Technology.

Facilities are located in the city of Petrópolis, State of Rio de Janeiro since 1998.

- LNCC is one of the 14 research units of the Ministry of Science, Technology and Innovation.
- LNCC is a reference in Scientific Computing in Brazil.
- Focus on High-performance Computing and Computational Modeling in the Sciences and Engineering:
  - Providing Computing Facilities, systems and networking, to the National Academic and Research Community.
  - Promoting R&D on Methodological and Application subjects.
  - Offering an innovative graduate program in Computational Modeling.

# RESEARCH AND DEVELOPMENT AREAS

## DISTRIBUTED AND HIGH PERFORMANCE COMPUTING

*Scientific Distributed Computation, Computer Networking , Massive Parallel Computation, Massive Data Storage, Quantic computation and information,Scientific Visualization, Collaborative Virtual Environments and Virtual Reality.*

## COMPUTATIONAL BIOLOGY

*Bioinformatics, Molecular Modeling of Biological Systems, Modeling and Numerical Methods in Biosystems, Numerical Ecology, Computational Neurociences and Biology*

## COMPUTATIONAL MODELING OF OIL RESERVOIRS, GROUNDWATER AND CO2 CAPTURE AND STORAGE

*Groundwater contamination, Injection and storage of carbon dioxide in the geological structure of the pre-salt. , Hydro-geomechanic coupling in the advanced recovery of oil in the pre-salt; Stochastic modeling of multiscale processes in heterogeneous reservoirs*

## MEDICINE ASSISTED BY SCIENTIFIC COMPUTATION

*Modeling of human physiological systems: application to diagnose, treatment and planning of chirurgical processes in the arterial system. Computational applications to the Heath Care System*

## STOCHASTIC AND ROBUST METHODS IN MODELING, ESTIMATION AND CONTROL AND APPLICATIONS

*Markovian decision problems and applications in stochastic networking; Modeling, signal estimation and control of complex systems: robotic, heavy traffic, economical and financial systems, population dynamics, sound synthesis/analysis.*

## MATHEMATICAL AND NUMERICAL METHODS APPLIED TO ENGINEERING AND SCIENCES

*Discretization, Asymptotic and Numerical Analysis of Partial Differential, Topological Sensitivity Analysis, Mathematical and Numerical Analysis in Fluid Mechanics, Control and Applications and Dissipative Dynamical Systems, Uncertainties quantification, verification and validation, Modeling, analysis and simulation of transport phenomena, Thermally coupled flows, Interface Problems, Meta-heuristics and Applications*

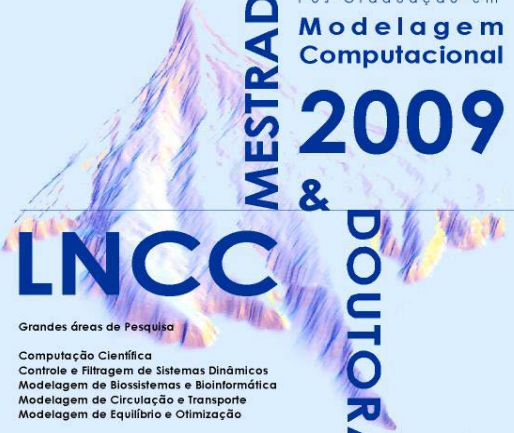
## COMPUTATIONAL MODELING OF KNOWLEDGE DIFFUSION

*Development of Mathematical Models for Knowledge Diffusion, Simulation of Public Policies in Science, Technology and Innovation, Representation of Knowledge in Ontologies*

# GRADUATE PROGRAM COMPUTATIONAL MODELLING

## MOTIVATIONS

- Science Trend Towards Synthesis Of Knowledge
- Matching Labor Market Requiring a Broader Education Profile
- Large Spectrum Capacity Building Rather Than Specialization
- Modeling of Natural Phenomena
- Computation Intensive
- Interdisciplinary
- Mix Of Students From Different Backgrounds
- Currenty 45 MSc and 49 PhD students
- 52 MSc and 45 PhD finished the program since 2001



Programa Multidisciplinar de Pós-Graduação em **Modelagem Computacional**

**MESTRADO & DOUTORADO 2009**

**LNCC**

Grande áreas de Pesquisa

- Computação Científica
- Controle e Filtragem de Sistemas Dinâmicos
- Modelagem de Biosistemas e Bioinformática
- Modelagem de Circulação e Transporte
- Modelagem de Equilíbrio e Otimização

Requisito Mínimo:  
Graduação completa

Inscrições até  
**30 de Novembro de 2008**

[posgrad@lncc.br](mailto:posgrad@lncc.br)

# NATIONAL SYSTEM OF HIGH PERFORMANCE COMPUTING













Each CENAPAD (8 regional centers) has now:

- Aprox. 600 nodes/center
- Users have their own storage systems
- Total power: 120 Tflops and 2.5 PB storage.



Atualmente a Incubadora LNCC possui nove empreendimentos e uma empresa graduada.  
São eles:

 <p><b>Terratempo</b> Soluções em meteorologia</p>	<p>Serviço de consultoria em meteorologia com soluções para os setores de agronegócio, florestal, mídias de comunicação, construção civil, trânsito e transporte, e turismo.</p>	<p>Atua no desenvolvimento de jogos para dispositivos móveis. Possuem também uma plataforma de desenvolvimento de advergames, que são jogos criados para divulgação de nomes e marcas.</p>	
 <p><b>DTEE</b></p>	<p>Projeto que consiste no desenvolvimento de um sistema de dispositivos eletrônicos de telemetria para redes de distribuição de energia elétrica (DTEE).</p>	<p>A Aprendanet se propõe a integrar educação – ciência - inovação via TI e produção de massa individualizada via Web 2.0.</p>	
 <p><b>inside</b> WIRELESS</p>	<p>Trabalham na criação de soluções de software abrangentes e convergentes com alto valor agregado para dispositivos móveis e internet, para atuar no mercado da América latina de entretenimento, marketing digital e produtividade.</p>	<p>Recentemente incorporada pela Technology &amp; Training, a empresa BFX entrou na Incubadora LNCC em março de 2009, e atua no mercado de Entretenimento Digital, e na área de projetos de simuladores virtuais.</p>	 <p><b>Technology &amp; Training</b> instituto de tecnologia de games</p>
 <p><b>E3rane</b></p>	<p>Atua no ramo de inteligência de negócios, desenvolvendo serviços que visam a descoberta de informações em bancos de dados.</p>	<p>Criada em dezembro de 2008, está desde fevereiro de 2009 na Incubadora LNCC, e tem como principal produto o atendimento com vídeo ao vivo.</p>	 <p><b>VideoVox</b> ATENDIMENTO COM VIDEO EM TEMPO REAL</p>
 <p><b>3MR&amp;R</b></p>	<p>Criada no final de 2008, é uma empresa que atua na área de tecnologia ligada à telefonia celular e internet, associada à produção de fonogramas ligados às tradições dos ritmos e folclore de nosso país.</p>	<p>Equipe de desenvolvimento baseado na linguagem Lua para dispositivos móveis baseados no framework Kepler; além de produtos para TV Digital, Novas Interfaces de Controle e Jogos.</p>	 <p><b>WOZEN</b> <b>EMPRESA GRADUADA</b></p>

# Contact

**Pedro Leite da Silva Dias**

*Director*

**diretoria@Incc.br**



**www.incc.br**